

# Combine

# THE SCOOP

This copy has been updated from the one that was mailed out to reflect sales being extended from April 8th to the 15th.



# World

MARCH-APR 2023

8%

OFF\*  
over \$8000

## ALL STAINLESS STEEL SEEDING PARTS



\* UNTIL APRIL 15th

for JOHN DEERE  
   
 PLUS universal parts for any seeder

10% OFF



## FULL SETS, NEW ATOM-JET OPENERS

NEW!



## SEED BRAKES plus blockage prevention & sabre clamps

25% OFF\*

## ALL<sup>†</sup> USED SEEDING PARTS

\* UNTIL APRIL 15th

† excluding meter rollers & boxes, packers, and transmissions/gearboxes



Pickup at Saskatoon or Brandon

OR

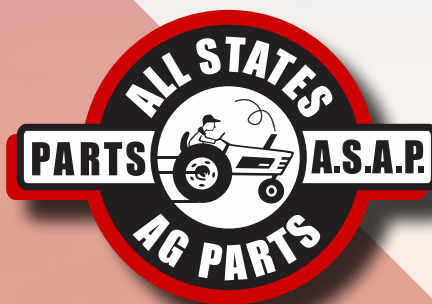


We ship to you

[www.combineworld.com](http://www.combineworld.com)  
1-800-667-4515



WE KNOW IT SOUNDS FUNNY, BUT...



If you need parts for your **tractor** this spring, give **Combine World** a try.

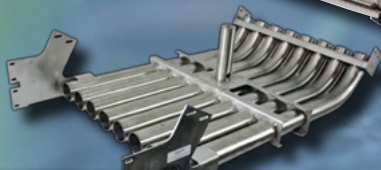
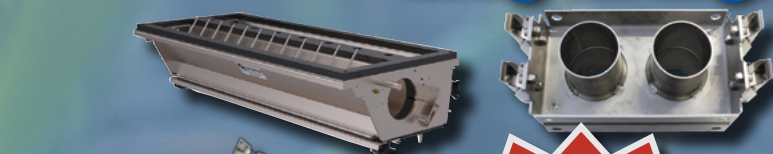


For Allis Chalmers, Case, Cockshutt, International, John Deere, Oliver, Minneapolis Moline, White, New Holland, Massey Ferguson, Massey Harris, and many others.

We stock over 1800 new & rebuilt parts for tractors, skid steers & more, and we order more every week.

- Newest inventory includes gaskets, engine overhaul kits and more.

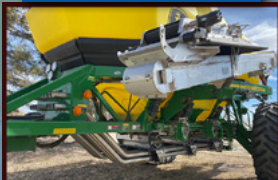
Long-lasting. Easy to install. Easy to clean.



STAINLESS STEEL SEEDING PARTS

Ask about **ONE AND DONE**: Complete Undersides

AUGERS & CONVEYORS!



\*UNTIL APRIL 15th

Increase your uptime. Durable, high-quality stainless steel resists fertilizer corrosion, reducing required maintenance.

Hundreds of parts for John Deere, Flexi-Coil, and Morris, plus universal parts to fit Bourgault and others.



All prices subject to change.

# MARCH-APRIL 2023

## Is it too early to say, "Spring has Sprung"?!

I don't know about you guys, but I have had enough of Winter, as mild as it was over here...

This winter was a busy one for us at Combine World. Our team completed the warehouse racking project in December, it was a "yuge" undertaking, but they managed to tackle it in record time. We put up two extra rows of racking in our warehouse to organize and store extra parts. The team worked tirelessly to make sure things were labelled properly and organized efficiently, so fingers crossed that will speed up our processes when it's "go time". The more parts we can jam-pack in our warehouse, the less down time for you! We are still working out some issues on special ordering non-stock items from the States. It seems freight is atrocious no matter which way you slice it, so we are trying to come up with something that works for us, and works for you.

If you have called us lately, you already know that we got a new phone system... it's automated. We hate that part. Nothing worse than needing to talk to someone, and getting a robot. We get it! However, this new system detects which parts person is "ready" and will ring to that open line. It sounds good on paper and we are hoping this will lessen the time spent waiting for someone to pick up. We also plan to have a live queue of phone calls up on the TV in the showroom so everyone can see the workload we are chewing through.



Sheri, General Manager

Combine World has recently become a dealer for Airguard, Wildfong Enterprises, and MAD Concaves! Airguard's specialty is creating innovative air distribution devices that integrate easily with air seeders, and overall improve farmer's yield while overcoming planting challenges. Visit our showroom or ask your favorite parts person about their Seed Brakes, Sabre Clamps, or Blockage Prevention Systems! Wildfong Enterprises is a local company which manufactures extended wear performance parts for your combine. We heard great reviews about their "Mad Max" accelerators for STS / S combines, so we decided to bring in a few to try out. We get a ton of calls for used heavy duty accelerators, and we sell out fast, so this seemed like a no brainer to have something readily available to suit our customers' needs. As for MAD concaves, we have had a lot of farmers asking us to be dealers. Last year we signed up, and this year we brought in a lot of stock for CNH, and JD combines. Please let us know if you have any questions regarding setting up your unit with MAD concaves as their rep is absolutely fantastic to work with and very knowledgeable!

Also, if you find yourself in our showroom in the near future, we are handing out free hoodies...excuse me...bunnyhugs, to everyone who leaves us some feedback, while supplies last! Good or bad, we benefit from it all!

**Looking forward to serving you this season! See you soon!**



**ALL USED SPRAYER BOOMS**

**25% OFF**



**ALL 10.3L IVECO ENGINES**

**PRICE DROP!**

**\$10,000**



**ORDER OPENERS OR TIPS WITH US!**

**DUTCH OPENERS**  
QUALITY FOR GENERATIONS™

**AIR SEEDER HOPPERS**

Makes loading quick and easy.

- 10" for Morris or JD. .... **\$2,199**
- 8" for Morris, JD, Bourgault & Flexi-Coil. .... **\$2,099**
- 7" (Order-In) ..... **\$1,999**



**NEW!**



**SEED BRAKES** *Better results with less seed. Get better seed placement, less bounce & less damage by slowing your seeds down as they leave the drill.*

**BLOCKAGE PREVENTION** *Cool your hydraulic oil. Reduce humidity & plugging.*

**SABRE CLAMPS** *These clamps bite! Integrated teeth keeps hoses on tight.*



**NEW!** **WILDFONG Mad Max**  
 HD Feeder Accelerator for John Deere STS/S  
**\$5,000**  
 (goggles, hot rod not included)

### OUR WARRANTY

Our machines will work as described and to the customer's satisfaction, the first time, or we will take the equipment back.



### POWERTRAIN WARRANTY

Combine World will split the cost 50/50 of any repairs needed to the powertrain in the first 50 hours of operation (after a predetermined deductible).



**2017 CASE IH STEIGER 420 4WD**  
**\$199,999**

6872 hrs, 420 HP, powershift, Pro700 & autoguidance, front & rear duals, **four new inner dual tires**, 4 hyd @ 48 GPM, very nice cab. Nice tractor.



**2015 JOHN DEERE 6195R MFWD**  
**\$177,000**

4640 hrs, 195 HP, GS3 Cmnd Ctr, AutoQuad Plus 20spd, 540/1000 PTO (160 HP), 3PH, 4 hyd, H380 FEL with bucket & grapple.



**2015 NEW HOLLAND CR9.90**  
**\$290,000**

2241/2962 hr, IntelliView IV, GPS steer & receiver, lat tilt, AHHC, Y&M, hopper ext, MAV, 28' aug, very nice.

### TRACKS



**Replacement rubber tracks for your track tractor.**  
 Priced per track (sold in pairs).

- JOHN DEERE**
- 36" 9RT/9000RT (30-Series) **\$20,500**
  - 36" 9000T (00/10/20-Series) **\$20,000**
  - 30" 8000T (00/10/20-Series) **\$20,000**
  - 30" 8000RT/8000T (30-Series) **\$18,000**
  - 25" 8000RT/8000T (30-Series) **\$16,000**



**2009 LEXION 570**

**\$89,900**  
 2321/3411 hrs, AHHC, F/A, reel spd, Y&M, hppr ext w/ cover, 20' aug, nice walkers, cab good, nice unit.

### Combine World has MAD Concaves in stock.



For Case IH, New Holland, and John Deere, including for the X9.

Easy-swap modular concaves, made from AR200 steel. Less dockage and less loss.

- NEW!** **CASE IH**
- 36" STX QUADTRAC **\$13,000**
  - 30" STX QUADTRAC **\$11,000**

- CHALLENGER**
- 36" MT800 **\$20,500**
  - 30" MT800 **\$18,000**
  - NEW!** 30" MT700 **\$13,000**
  - 25" MT700 **\$11,000**

- CAT**
- 30" 65/75/85/95E **\$14,500**
  - 25" 65/75/85/95E **\$12,500**



**2012 MACDON FD70 40'**  
**\$54,900**



**2017 JOHN DEERE 615P 15'**  
**\$29,999**

**MORE INSPECTED & REPAIRED EQUIPMENT ONLINE!**

### AG TIRES



**BRAND NEW FACTORY-DIRECT TIRES**

- 900/60R32 • 35.5-32 | 30.5-32 • 20.8-32
- 710/70R38 • 520/85R38 | 23.1-26 (R1 & R3)
- 18.4-42 • 18.4-38 • 18.4-34 | 16.9-24 • 16.9-28 | 14.9-24 • 14.9-28 & more!



**GOOD USED NAME-BRAND TIRES**

Inspected & sold with one year warranty.

Many sizes of tires and rims for combines, tractors, sprayers, swathers, air drills, air carts & more.



JD 1820 & 1835 DRILLS  
 1900 & 1910 AIR CARTS



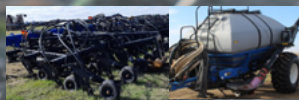
FLEXI-COIL 1110, 1330, 1610, 2320, 2340, 3450 AIR CARTS;  
 5000 & 7500 AIR DRILLS



BOURGAULT 3310PHD & 5710 DRILLS; FH-536 AIR SEEDER;  
 180, 2155, 3195, 3225, 4250, 4350, 5250, & 5350 AIR CARTS



MORRIS 6180 & 7240 AIR CARTS;  
 MAXIM DRILL



NEW HOLLAND P2070 AIR DRILL;  
 SC380, SC430, P1060 AIR CARTS

† excluding meter rollers & boxes, packers, and transmissions/gearboxes.



### ALL<sup>†</sup> USED SEEDING PARTS

**\* UNTIL APRIL 15th**

